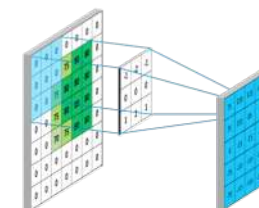
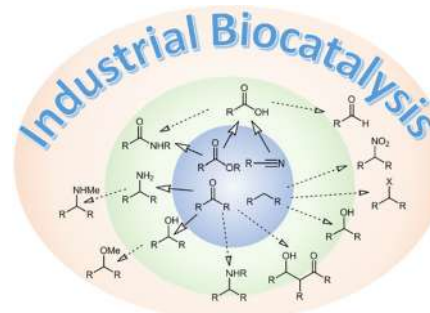
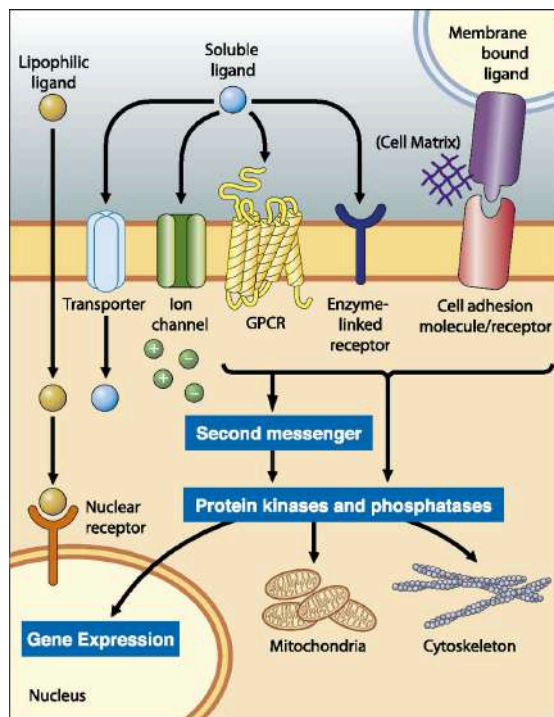
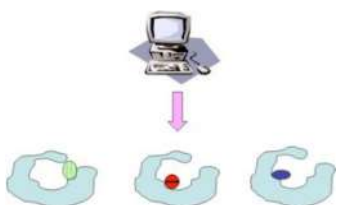
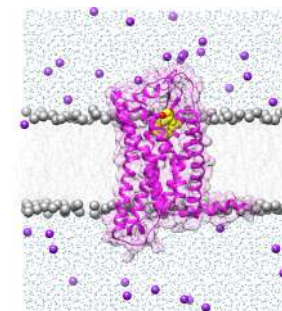
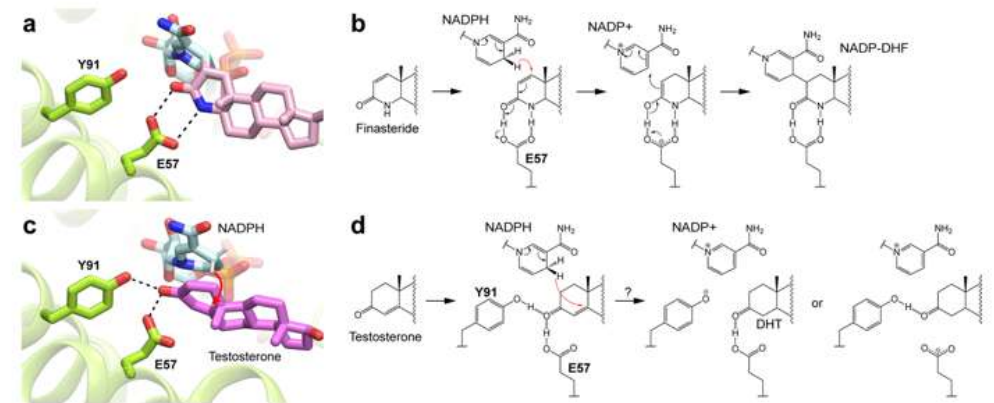
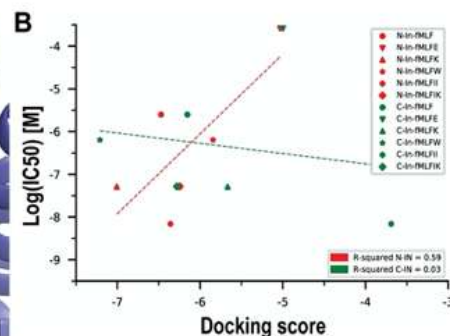
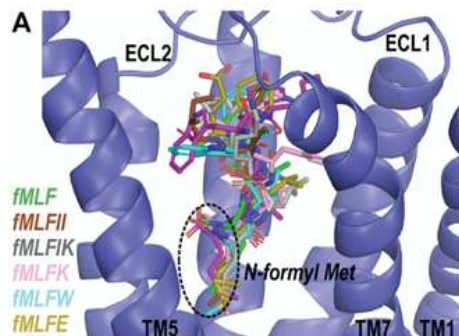
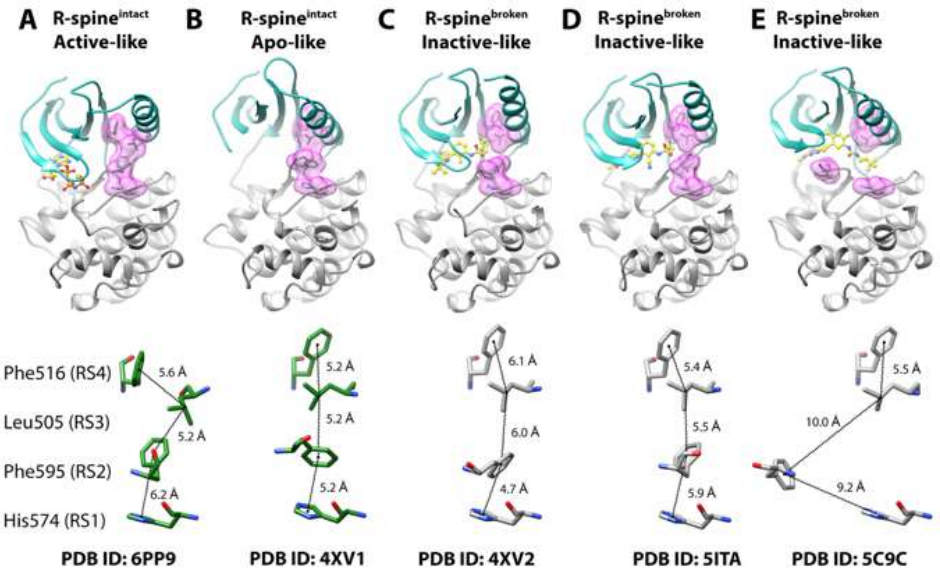
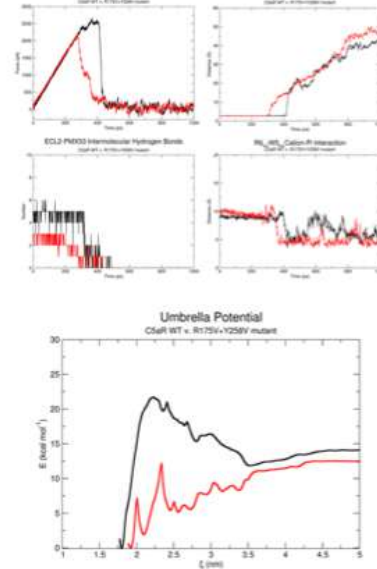
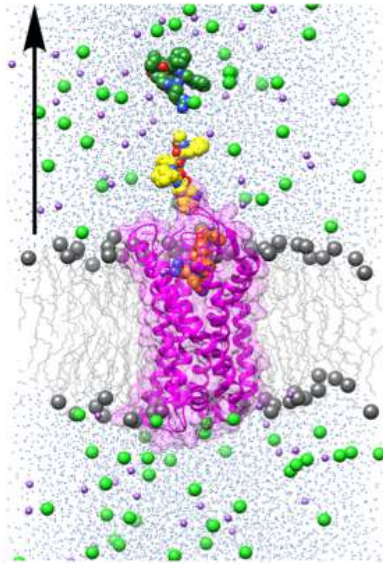


Computational modeling of protein-ligand interactions



Structure and function (basic research)

Outside: BELGIUM, CHINA, USA
Local: NCCS, DUKE-NUS

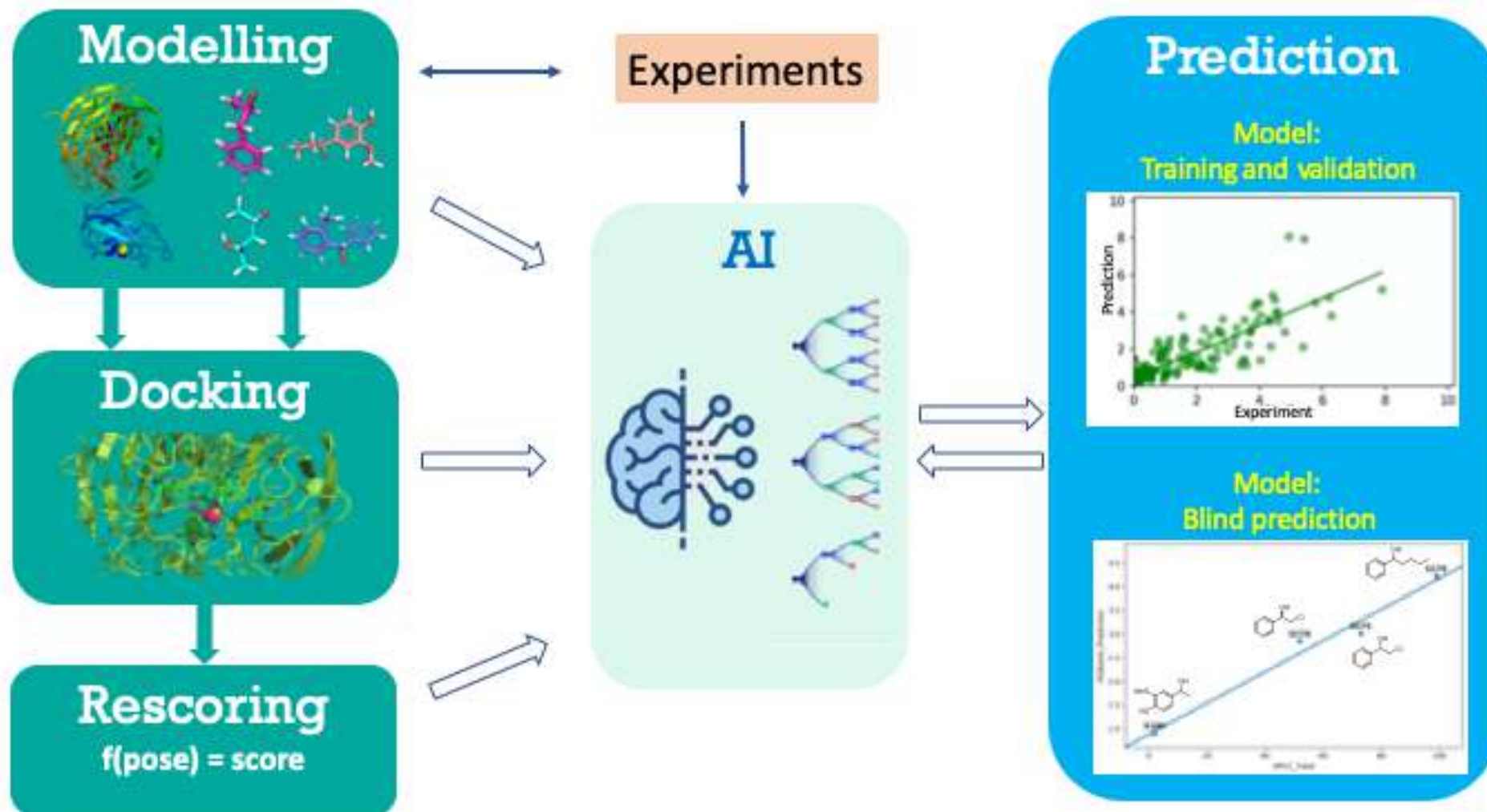


Krishna Deepak, Ravi Verma, Shreyas Supekar, Xu Qisong

Commun. Biol. 2020, Nat. Commun. 2020 (1), Nat. Commun. 2020 (2), Sci. Advanc. 2021

Enzyme engineering (applied research 1)

Outside: UK, HUNGARY
Local: Sebastian, ICES, SIFBI,
IHPC, NUS SynCTI

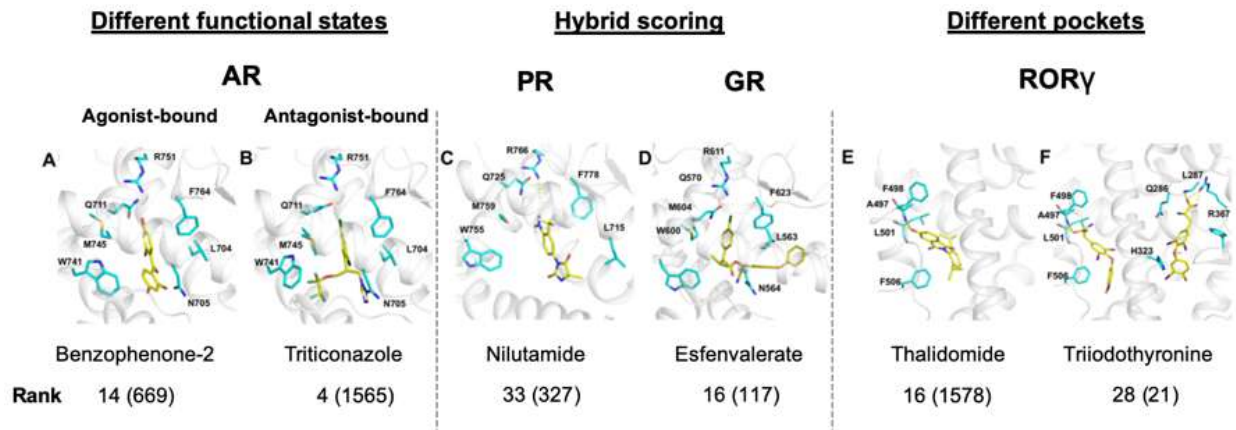
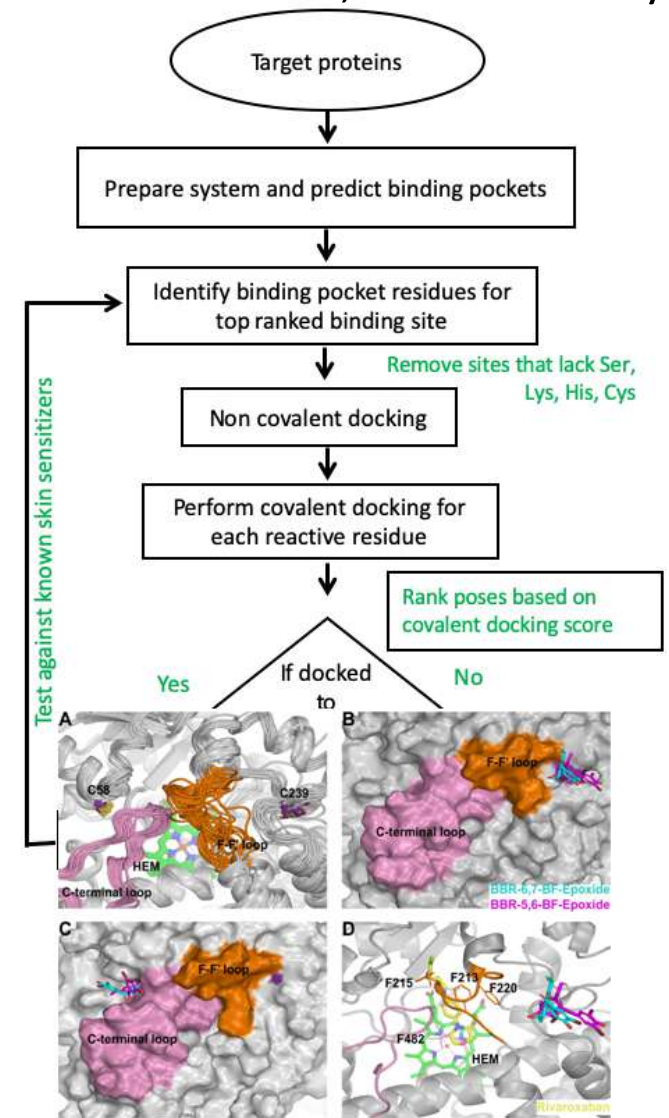
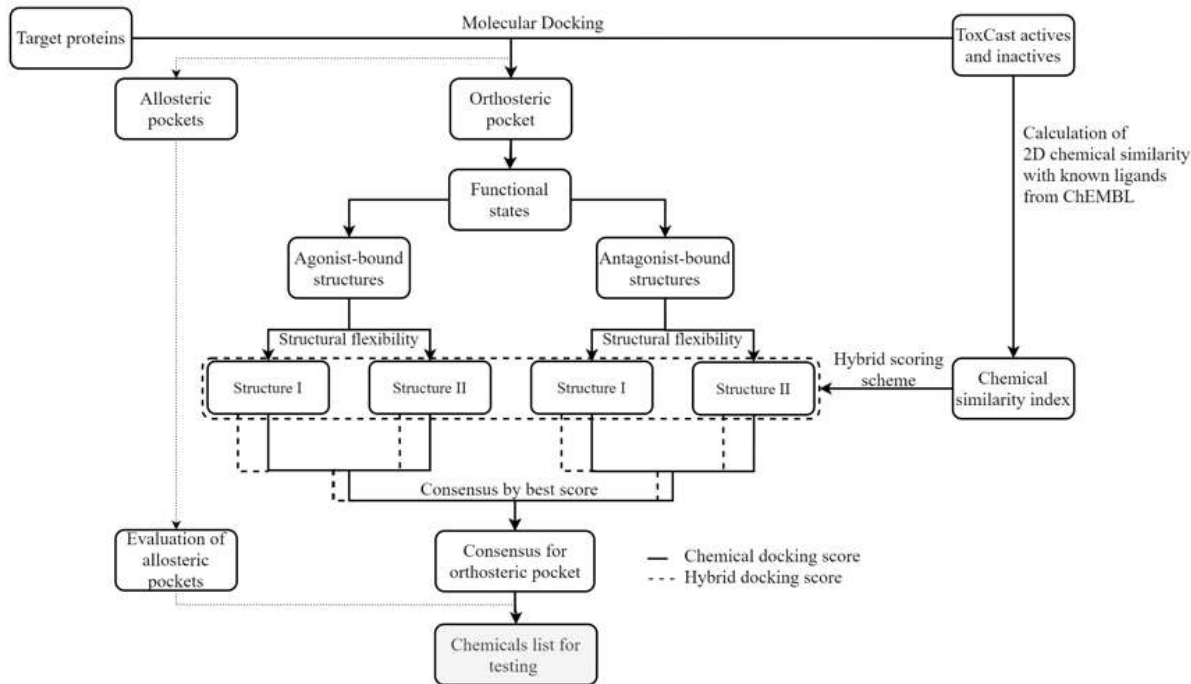


Shreyas Supekar, Zhao Lina, Yossa Hartono, Ho Wei Chin

Structure 2020, DMM 2020

Food and chemical safety (applied research 2)

Local: Lit-Hsin, Sebastian, Hwee Kuan, IMCB, NUS Pharmacy

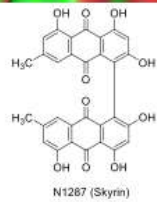
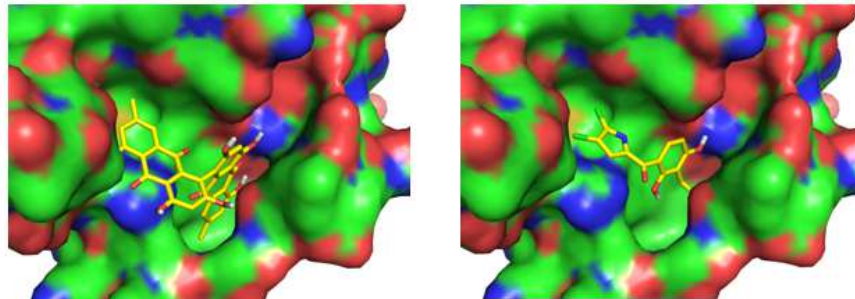


Chaitanya Jaladanki, Ravi Verma, Lin Fu

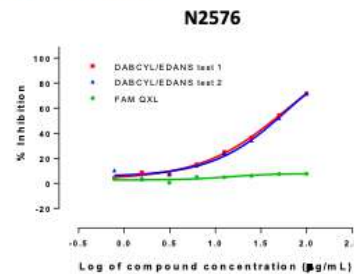
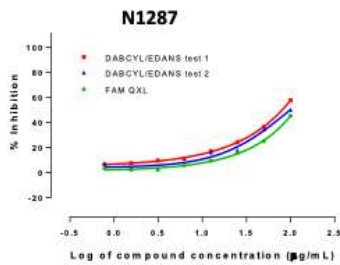
Arch. Tox. 2020, Mol. Pharm. 2021, JPET 2020

Ligand discovery (applied research 3)

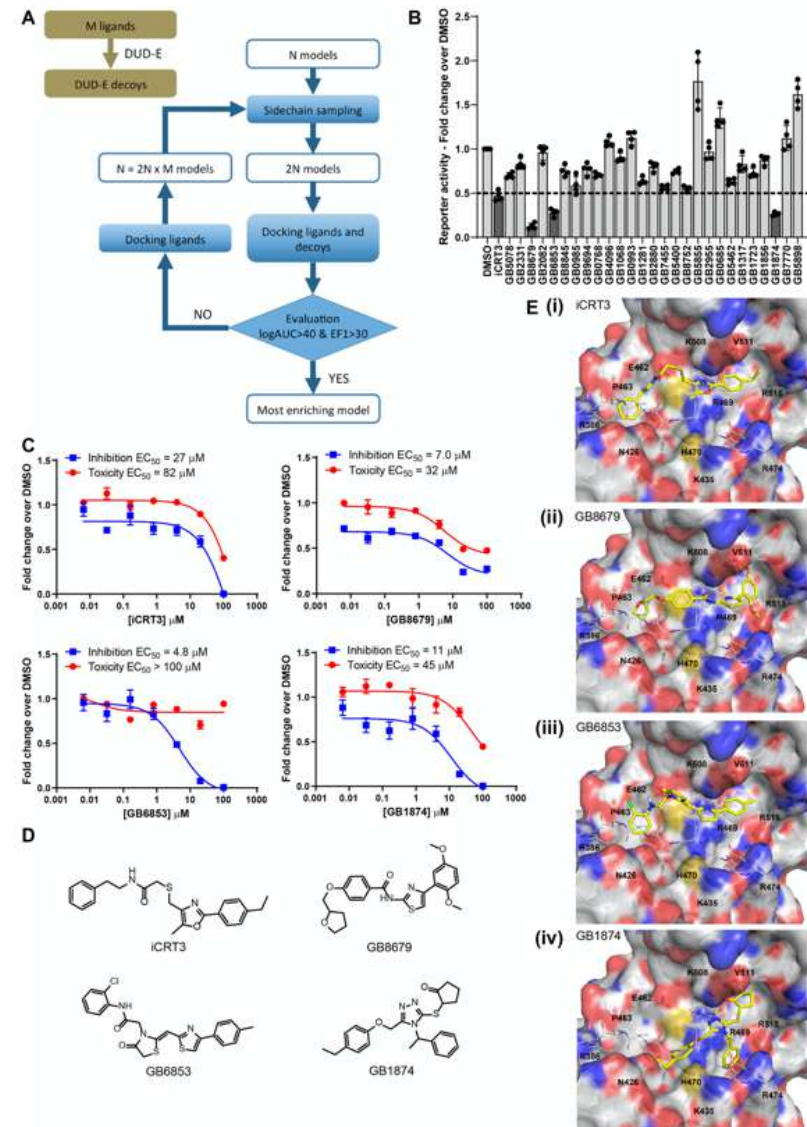
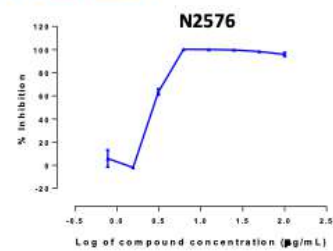
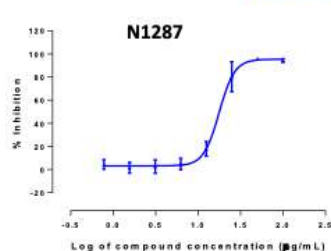
Local: SIFBI, GIS, NCCS,
NUS microbiology



Sortase A enzyme assay:



S. mutans whole-cell assay:



Zhao Lina, Du Weina, Srdan Masirevic, Chaitanya Jaladanki

IJMS 2020, iScience 2021, Patent 2020, TD 2021